

Playing with Light

Basic settings for working with different lighting, you can adjust **ISO**, **WB** and **Shutter** in pro-mode on a phone as well

- **White Balance** WB should be on AWB (Auto)
- **ISO** 400
- **Shutter Speed** – hand-held no slower than 1/15 but the shutter can be sped up to as fast as light allows
- **Aperture** F3.5-5.6 on a basic lens will let as much light in as possible

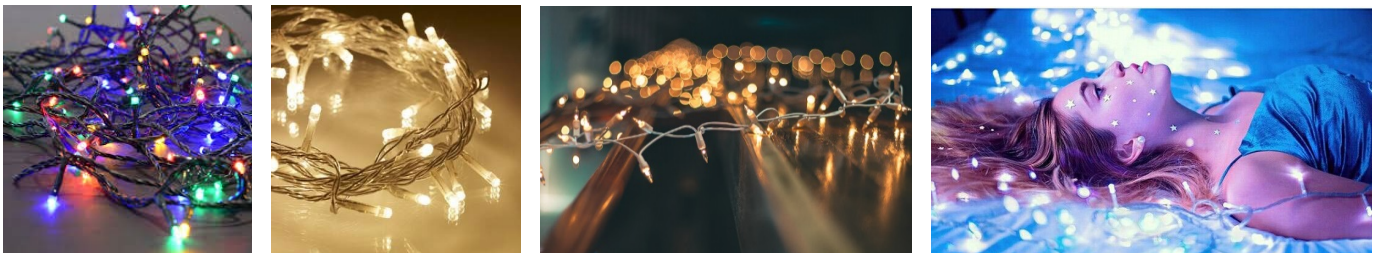
Does your household have one of these work lights or torches you can use for a photo shoot?

- **White Balance** WB should be on AWB (Auto) or try the tungsten/bulb setting ☀

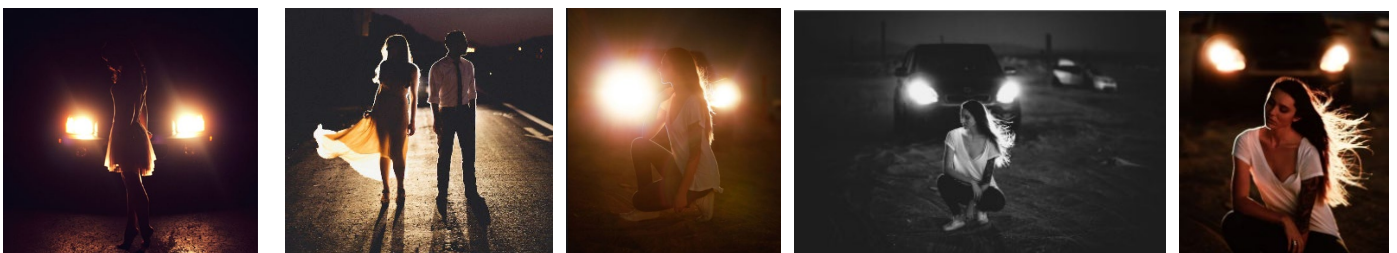


Does your household have any Christmas Lights you can use for a photo shoot?

- If you are going to play with movement please use battery operated lights!



Do you have a car and a driveway area at home that you could use for a photo shoot?



Nothing beats playing with natural light and shadows

