



ANZAAE

Aotearoa New Zealand Association of Art Educators



Who we are

Aotearoa New Zealand Association of Art Educators (ANZAAE) is the national subject association for Visual Arts education in New Zealand. We support and promote art education as an integral part of the National Curriculum, Te Marautanga o Aotearoa and further education in Aotearoa New Zealand.

ANZAAE supports the work of educators in Aotearoa New Zealand through advocacy and representation, communication, professional learning, sharing, and developing knowledge. We believe that the Arts are integral to the history and the creative and thriving future of Aotearoa New Zealand. We recognise and value our responsibility under Te Tiriti o Waitangi, and in Aotearoa New Zealand's bicultural context. We are committed to equity and excellence for all, and support Visual Arts communities through advocacy, representation, professional learning, and innovation.

An executive committee was elected at the 2017 ANZAAE National Conference in Whanganui. We are extremely grateful for the time, passion, effort, and expertise both past and current committee members have brought to the Executive role over the past four years.

The current ANZAAE Executive Committee members are

Emma Wise (Co-Chair), Donna Tupaea-Petero (Co-Chair, Tangata Whenua) Esther Hansen (Treasurer), Lisa Ponweiser (Secretary), Jennie Williams, Bridget Blair, and Sam Cunnane.

Our reach

The number of conference delegates registered for conference in 2021 is our current 'registered' ANZAAE membership. At the time of writing this, conference registrations for 2021 stand at almost 400.

Due to Covid in 2020 we removed the need for teachers to be registered members to access resources and instead shared our resources with everyone. To do this we used the Vis Arts mailing list with a membership of 1360 members potentially reached.

Our website traffic over the past year, is also an indication of the reach we are beginning to have.

Users

3,490



New Users

3,334



Sessions

6,087



Pageviews

12,254



Pages / Session

2.01

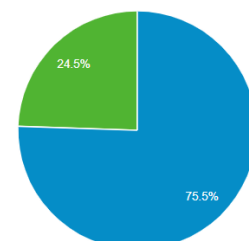


Avg. Session Duration

00:01:49



■ New Visitor ■ Returning Visitor



What we have been doing

Since 2017 ANZAAE has made significant strides forward on behalf of Art educators. At a National level we have forged good working relationships with National bodies such as the Ministry of Education, NZQA and the PPTA. We have also supported the development of Whirimanga, an Alliance of Art, Dance, Drama and Music subject associations, bringing a stronger voice to the table for advocacy discussions.

Recent behind the scenes initiatives include:

- Rewritten the ANZAAE constitution to take us into the 21st Century
- Provision of advocacy and support for the Arts
- Worked to grow the ANZAAE website and our presence on social media
- Secured Networks of Expertise funding, supporting us to develop a sustainable association
- Facilitated the sharing of ideas and resources amongst all members of the association
- Forged links with Auckland Art Gallery Toi o Tāmaki Art Gallery Education partnership focusing on Professional development around the *Toi Tū Toi Ora: Contemporary Māori Art Exhibition*
- Presenting survey results to the Ministry and NZQA leading to changes in how Level 1,2 and UE were assessed and awarded in 2020 to alleviate stress for teachers and students
- Supported initiatives to keep Sculpture and Printmaking in the NZQA Scholarship exams
- Communicated with the media about Art education
- Engaged with the Ministry and Tertiary institutions to recognise the status of Whakairo
- Organised PLD opportunities for Visual Arts educators
- Grown our engagement with the Primary sector
- Contributed to the RAS Review (Review of Achievement Standards)
- Our tangata whenua representative along with other Māori and Pasifika arts educators, have commenced work around Mana ōrite mō te mātauranga Māori and creating opportunities that acknowledge our diversity and equity for all in Visual Arts education.

Recent face to face opportunities and ANZAAE initiatives include:

- Worked alongside CATA to deliver National Conference in April 2021
- Toi Tū Toi Ora: Contemporary Māori Art Educator Workshop December 2020
- Printmaking Workshop December 2020
- Folio Feedback Days, most recently at Wintec in Hamilton March 2020
- Sponsored best practice workshops in Scholarship Paint, Sculpture, Printmaking, Design and Photography run at Kohia Teachers Centre 2019
- NCEA moderation workshops to aid teachers in sole charge 2019
- PLD for new teachers

Recent online opportunities and ANZAAE initiatives include:

- Learning @ Home Online Resources shared through lockdown
- Consultation with members and teachers through surveys and other information streams
- NAF and MOE Webinar - Covid response clarification meeting
- Support on-line, through regional representatives and digital and printed resources.
- Development and sharing of online resources and approaches to teaching in Painting, Printmaking, Design and Photography in response to the implications posed by Covid-19 and online learning
- Online Painting Resource – August 2020 - Painting when time pressured
- Online Photography Resource – September 2020 - Photography under pressure
- Online Design Resource – October 2020 - Designing under pressure

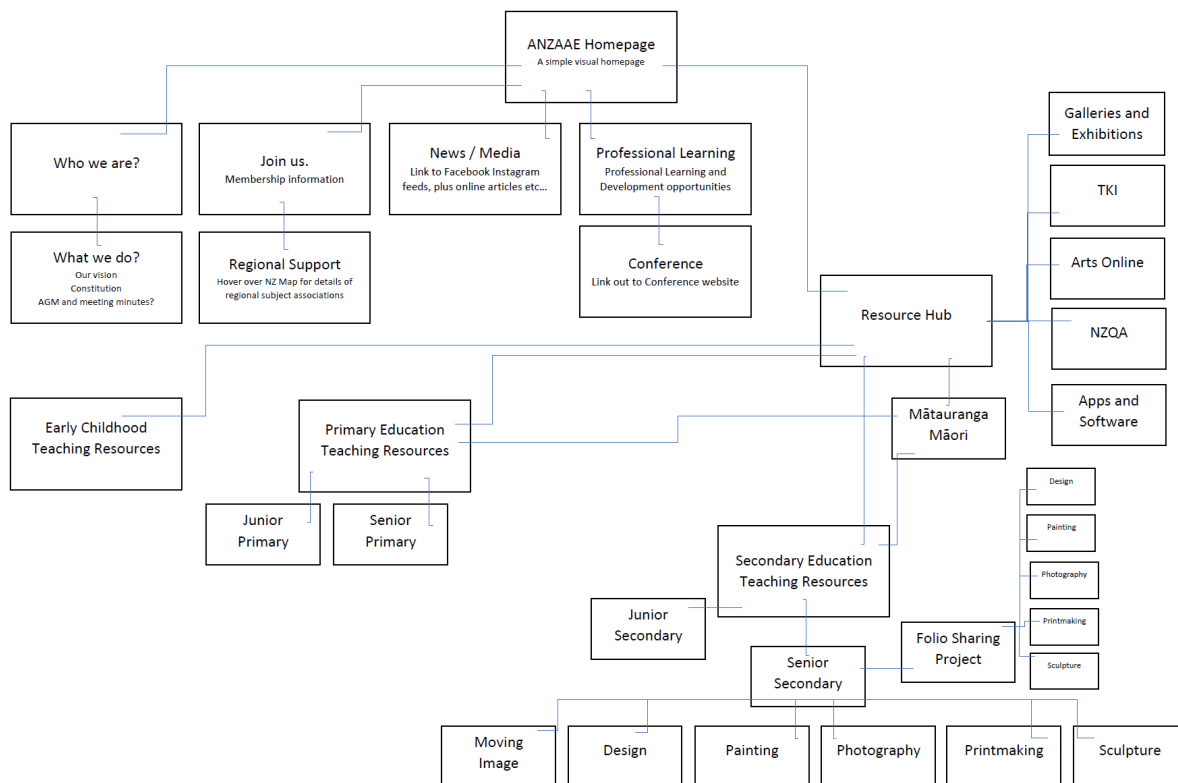
Things we would like to improve

We have worked closely with established regional subject associations to deliver PLD however, we acknowledge that our aim to build closer working relationships with all our regional subject associations is a work in progress.

Growing the resources on the current ANZAAE website has been a challenge, especially regarding the Level 3 Folio Sharing project, which relies on teacher and student participation for success.

Our website, survey's, communication with teachers, and the feedback around NCEA changes have provided evidence of specific needs which we have analysed and are in the process of planning to meet. We have contracted an expert to synchronise and develop systems for communication and networking, and to support us in the development of a new website and Resource Hub which is currently in development.

Due to the voluntary role of the ANZAAE Executive committee, and the expert members we draw on, the development of our new website has moved slower than we would like.



The vision and work for ANZAAE from here

Advocacy, Growth, Communication and Regional Development

ANZAAE must remain actively involved with the MoE, and NZQA through curriculum reform, Māori and Pasifika Arts education reform and research, the current NCEA review of standards process, resource development. PLD provision, and assessment and verification.

The association must continue to grow membership, engaging with all educators working in Visual Arts education in New Zealand. ANZAAE must support every region to grow a strong regional subject association that ANZAAE can then feed into and support with on-going and locally based professional development opportunities.

ANZAAE has a vital role in ensuring an effective network and flow of information between Tertiary Art providers, Galleries, Iwi, Primary, Intermediate and Secondary schools in both English and Māori medium and the wider community.

Building Online Capacity

The association's presence on social media platforms needs to be maintained, but also needs to grow.

ANZAAE must continue to grow our online capacity to deliver PLD and provide newly developed resources, ensuring greater reach to our membership. The resource hub will contain a curated space of existing online resources but will also include newly developed resources, with the first of these being developed as a result of the Toi Tū Toi Ora: Contemporary Māori Art Exhibition Educator Workshop held at the end of 2020. Once it is established, the resource hub will provide an opportunity for educators to be able to contribute resources, these will then be moderated before being shared online through the hub.

Professional Learning and Development

The ANZAAE Executive and representative members will continue to be heavily involved in developing our new NCEA standards and will need to have strong capacity to deliver PLD focused on readiness for change.

ANZAAE must continue to provide opportunities for teachers to access regional and national assessment support, forums, workshops, expert knowledge, and skills for beginning and experienced teachers at all curriculum levels.

ANZAAE must endeavour to engage expert facilitators, but also engage facilitators who have experience across a range of contexts and settings, demonstrating awareness of the diverse and ethnic-specific identities, languages and cultures educators work with in a school environment.

The association must continue to grow teacher capabilities and provide opportunities for leadership development through conferences, HOD workshops, targeted and responsive face-to-face professional learning and development / wānanga opportunities and contributions to publications

The association should continue to provide scholarships for those most in need (e.g. provisionally registered teachers, geographically isolated teachers) to attend national and regional conferences.

As an association, we are acutely aware of the need to address the learning needs of our most vulnerable communities - Māori and Pasifika in particular. For this reason, we have always been committed to developing resources and opportunities that prioritise these areas. Future professional learning and development will continue to address these gaps and the disparities that continue to persist.

With further NEX funding, ANZAAE will host a Māori Art and Educators conference in 2022 in conjunction with the Auckland City Art Gallery. The conference will build on the work started at our 2020, and upcoming 2021, PLD days focused on Toi Tū Toi Ora: Contemporary Māori Art and how to meaningfully engage with mātauranga Māori in the classroom. Falling in between ANZAAE National Conference years, this event will provide an opportunity for educators to build an understanding of Aotearoa New Zealand's Histories in the context of Visual Arts and will help to link Māori Art Educators across different sectors and teaching and learning areas. Once established this conference model can then be held at other galleries throughout New Zealand as well.

ANZAAE also hope to draw upon our collective expertise to deliver PLD at sites of significance whilst ensuring national spread where possible. The delivery of place-based, or site specific PLD specific to sites of interest e.g. Rangiriri, Orakei Marae, Ihumatao, Parihaka, Waitangi, would provide rich and authentic learning, hearing histories and narratives firsthand from kaumatua/kuia and/or other cultural experts. The learning would culminate in the development of resources to be shared.

Whirimanga

The association will remain committed to the development and growth of Whirimanga, seeing value in an alliance across The Arts which will enrich and provide for the following:

- An opportunity for professional learning and development delivery that focuses on cross-curricular and broader holistic approach to the Arts

- Recognition and application of Te Tiriti o Waitangi principles through resource development, authentic partnerships and support for Ngā Toi and iwi, hapū and mana whenua
- Strengthening our collaborative expertise across the Arts that focus on mātauranga Māori, and the rich, creative legacies of our unique Māori and NZ Histories
- Broker reciprocal partnerships with iwi, hapū and mana whenua

Te mana ōrite mō te mātauranga Māori

Te mana ōrite mō te mātauranga Māori is a fundamental and necessary change to our curriculum and NCEA which enables parity for mātauranga Māori so that it has equal value as other bodies of knowledge. Such contexts will provide opportunities for Māori ākonga to learn and succeed as Māori.

For the Visual Arts and ANZAAE this means:

- Building teacher capability around culturally inclusive NCEA and assessment practice that is respectful to mātauranga Māori or Māori ways of knowing, being and doing
- Supporting teachers with Māori-centred contexts for learning, exemplars, and assessment resources
- Utilising inclusive standards and assessment resources in culturally responsive ways to allow for diverse cultural perspectives (in particular, those of tangata whenua)
- Providing professional support for schools and teachers to broaden the Visual Arts learning experience through the inclusion of Toi Māori courses and approaches
- Promote and develop the cultural capability of teachers to promote mana orite and develop culturally sustaining teaching, learning and assessment practices
- Building the capacity and expertise of Māori Art and educators through a proposed wānanga (for 2022)
An important part of our commitment here is in ensuring Māori Art educators are well supported as tuakana in respect to the mātauranga Māori space
- Drawing on the expertise of our Māori Art educators to plan and deliver regional PLD that develops cultural competencies, deepens understandings of mātauranga Māori and models best practice in engaging with iwi, hapū and mana whenua in meaningful and respectful ways
- Inviting expertise and participation of kaumatua / kuia in the design and delivery of Māori-focused PLD
- Advocating for Māori representation on RAS working groups – this has already been met but we are committed to ensuring this follows through at each level

ANZAAE tangata whenua representatives will need to be actively involved with Māori art educators and providers across all sectors, and along with other Māori and Pasifika arts educators, continue important work around Mana ōrite mō te mātauranga Māori, creating opportunities that acknowledge our diversity and equity for all in Visual Arts education.

ANZAAE needs to work in close partnership with Māori artists and organisations and our and advisory group are instrumental in supporting Visual Arts educators to establish reciprocal and meaningful relationships with iwi, hapū and mana whenua.

We would like to thank the outgoing Executive Committee for their amazing contribution and commitment to ANZAAE and our membership for their continued support of ANZAAE.

Ngā mihi nui,



Emma Wise

Co-Chair ANZAAE



Donna Tupaea-Petero

Co-Chair ANZAAE