

Who we are

Aotearoa New Zealand Association of Art Educators: Te Rūnanga Hautū Mātauranga Toi O Aotearoa (ANZAAE) is the national subject association for Visual Arts education in New Zealand. We support and promote art education as an integral part of the National Curriculum, Te Marautanga o Aotearoa and further education in Aotearoa New Zealand.

ANZAAE supports the work of educators in Aotearoa New Zealand through advocacy and representation, communication, professional learning, sharing, and developing knowledge. We believe that the Arts are integral to the history and the creative and thriving future of Aotearoa New Zealand. We recognise and value our responsibility under Te Tiriti o Waitangi, and in Aotearoa New Zealand's bicultural context. We are committed to equity and excellence for all, and support Visual Arts communities through advocacy, representation, professional learning, and innovation.

The current ANZAAE Executive Committee members are

Alice Alva, Tanu Aumua, Bridget Blair, Genevieve Craig, Sam Cunnane, Dagmar Dyck, Esther Hansen (Treasurer), Amy Hudson, Vicky Moore-Allen, Lisa Ponweiser (Secretary), Kate Rivers, Donna Tupaea-Petero (Chairperson Tangata Whenua), Astrid Visser, Jennie Williams, and Emma Wise (Chairperson Tangata Tiriti)

We are extremely grateful for the time, passion, effort, and expertise committee members have brought to the Executive since the 2021 ANZAAE Conference elections. Executive committee members are volunteers in the role.

What we have been doing

General

- Continuing to meet obligations for Networks of Expertise (NEX) contract
- Becoming a registered Charity
- Managing financial obligations as a NEX, Incorporated Society, and Charity

Membership

- Increasing membership (31 March 2022 = 156 members, 20 June 2023 = 567 members)
- Communicating regularly with members via social media and often (but not too often) by email
- Distributing Toi Tū Toi Ora books to ANZAAE members at discounted rates
- Providing guidance for the Covid Protection Framework Red setting and health and safety
- Supporting members in difficult times
- Delivering Toi Tū Toi Ora books to schools affected by weather events

Professional Development

- Working to deliver ANZAAE national conference in July 2023
- ANZAAE Digital Series: Ros Cameron - Approaches to teaching Sculpture with – April 2022
- ANZAAE Digital Series: Jonathan Cameron - Approaches to teaching Photography – May 2022
- ANZAAE Digital Series: Paul Stevens: Teaching Senior Photography – May 2022
- ANZAAE Digital Series: Katie Poynter: Approaches to Scholarship and Painting – June 2022
- Folio Board PLD with Esther Hansen: Tauranga Art Gallery – April 2022
- ANZAAE Digital Series: Alice Alva: Hui for PCT's – April 2022

Engagement

- Engaging with the tangata whenua representatives regarding future development of ANZAAE
- Tangata Whenua Hui at Massey – July 2022
- Continuing to engage with the Ministry of Education and NZQA
- Helping to connect the Ministry of Education and RAS leads with regional representatives
- Continuing to grow engagement with Māori Medium, ECE, Primary and Intermediate sectors and educators in Area schools or who are geographically isolated
- Delivering Toi Tū Toi Ora books to Māori Medium with correspondence in Te Reo Māori
- Delivering Toi Tū Toi Ora books to Intermediate and Area schools
- Highlighting opportunities for engagement with NZQA, NCEA RAS, and Curriculum Refresh

Resourcing

- Facilitating the sharing of ideas and resources
- Published resources alongside Auckland Art Gallery Toi o Tāmaki in Te Reo Māori and English
- On-going development of ANZAAE Digital Platform and Resource Hub
- Supporting teachers in their growth and understanding of NCEA RAS
- ANZAAE Digital Series: Jennie Williams MoE: NCEA RAS – May 2022
- ANZAAE Digital Series: Geoff Harris NZQA: Integrated Assessment – May 2022
- ANZAAE Digital Series: Han Nae Kim - Workshop: Experimental Drawing – October 2022
- ANZAAE Digital Series: Zarah Southon - Workshop: Drawing Realistic Portraits – October 2022
- ANZAAE Digital Series: Nigel Borell - Workshop: Kōwhaiwhai – October 2022
- Delivering Toi Tū Toi Ora to schools piloting NCEA Level 1 for the RAS

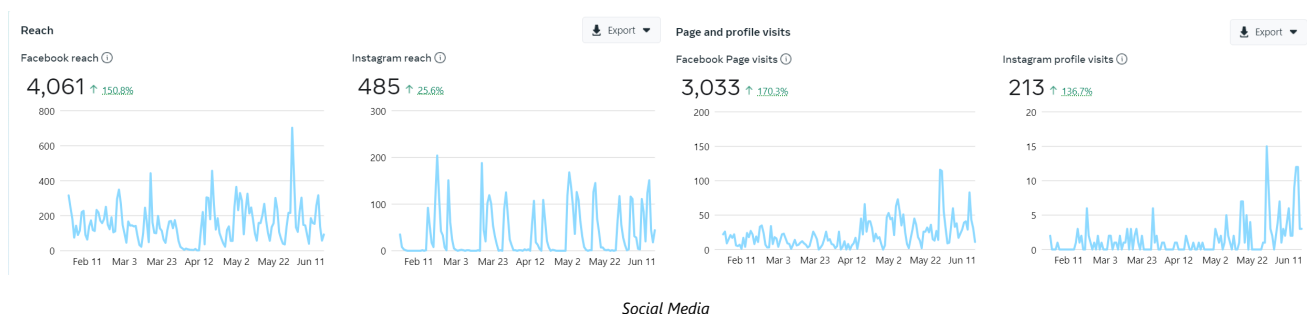
Regional Growth and Support

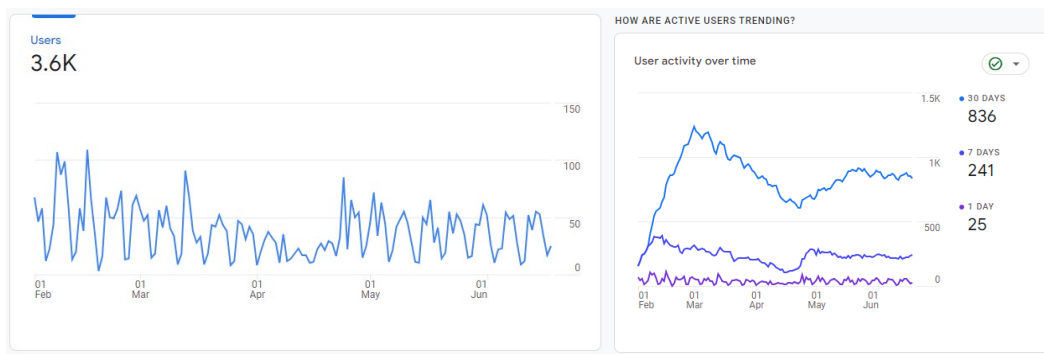
- Facilitating the sharing of information regarding changes faced by the sector
- Supported Regional representatives to deliver PLD within their regions
- Developed a budget for regions based on regional membership
- Regional Representatives Hui at City Gallery – October 2022
- Delivering Toi Tū Toi Ora to ASATA to support reconnecting Auckland educators at Te Puna Toi
- Delivering Toi Tū Toi Ora to all schools in the wider Wellington region to promote national conference

Our Reach: Membership and Engagement.

At the start of 2022 we resumed [ANZAAE membership and fees](#). On 31 March 2022, ANZAAE had 156 members signed-up, currently we have 567 members. This number excludes non-member conference delegates, who are considered members until the conclusion of ANZAAE 2023 Conference.

In addition, we use our website and social media followers as an indication of our reach. Facebook remains our most popular form of communication. Users do not need an account to access our Facebook page.





ANZAAE Website (excludes Resource Hub)

We have three communication streams we monitor to assess member needs

- Direct email contact from members.
- Meta Business Suite allows us to monitor member engagement with posts, which helps us to identify areas of interest for members. It also indicates when members may be feeling overwhelmed with workload due to less interaction online.
- VisArts, we monitor threads from this email list and respond where needed, including directly contacting those in need of help, or linking members to each other to assist.

Recognising that 'time is short' for teachers, our [Instagram](#) and [Facebook](#) messaging is short and we limit email contact to once or twice per Term.



To reduce the workload on HOD's, we shifted away from department membership to individual membership. This ensures information is directly received by all ANZAAE members, without requiring department leaders to distribute it on our behalf. Our rates are still comparable to other subject associations.

DANZ MEMBERSHIP TABLE						
SILVER \$50	GOLD \$150	PLATINUM \$500	Primary Primary Membership School NZ\$ 121 (year + GST)	Secondary School 1-3 PE Teacher/Staff NZ\$ 265 (year + GST)	Secondary School 4-7 PE Teacher/Staff NZ\$ 386 (year + GST)	Secondary School 8+ PE Teacher/Staff NZ\$ 499 (year + GST)
Access to DANZ Advisory Services	Access to DANZ Advisory Services	Access to DANZ Advisory Services	Applicable to all staff within a primary or intermediate school	Applicable to 1-3 PE staff of a secondary school	Applicable to 4-7 PE staff of a secondary school	Applicable to 8 or more staff within a secondary school
Discounts to workshops/seminars/forums	Discounts to workshops/seminars/forums	Discounts to workshops/seminars/forums	Register	Register	Register	Register
PREFERENTIAL access to discounted professional indemnity insurance cover	PREFERENTIAL access to discounted professional indemnity insurance cover	PREFERENTIAL access to discounted professional indemnity insurance cover				
DANZ Magazine	DANZ Magazine	DANZ Magazine				
Full listing in Danz Directory on DANZ website	Full listing in Danz Directory on DANZ website	Full listing in Danz Directory on DANZ website				
Eligible for entry to DANZ giveaways & promotions	Eligible for entry to DANZ giveaways & promotions	Eligible for entry to DANZ giveaways & promotions				
Logo acknowledgement in DANZ publications	Logo acknowledgement in DANZ publications	Logo acknowledgement in DANZ publications				
Eligible for entry to DANZ giveaways & promotions	Eligible for entry to DANZ giveaways & promotions	Eligible for entry to DANZ giveaways & promotions				
JOIN NOW						

Membership Type	Membership 2022	School Fee Structure
School Membership: all teachers of Maths at your school are members (See structure to the right) Individual Membership: \$30 for an individual that does not belong to a school that is a member Primary and Intermediate teacher access is free. Please register by clicking on the link	To gain access to the resources you must be a member with NZAMT. School (website assessment access) Membership fees for the year ending December 2022	School size # of students 500 or less \$170 501 to 1000 \$200 1001 to 1500 \$230 1501 to 2000 \$260 2001 or more \$290

Secondary (Individual Members)	Primary (Individual Members)
Individual members of the Association have the right to vote at General Meetings, are entitled to stand for office at regional or national level, have access to online resources, and may receive membership of the Association. \$60.00 NZD (GST incl.) REGISTER	For Primary, Intermediate, and DEC Classes – Primary School Membership of the Association entitles up to four current teachers from the school the full rights of an individual Member as described above. \$60.00 NZD (GST incl.) REGISTER
Individual	Associate
For teachers, tertiary providers – Individual membership entitles the holder of that institution to be listed on individual members, allowing them the full rights of an individual member as defined above. \$100.00 NZD (GST incl.) REGISTER	For teacher companies and industry partners – Associate members are entitled to attend workshops, stand for office at regional and national level, have one vote at any general meeting, have access to online resources, and receive any publications of the Association. \$120.00 NZD (GST incl.) REGISTER
Individual Membership - NZ\$ 120.00	School Membership - NZ\$ 126.00
Entitles one person to an annual individual membership with full rights. JOIN	Entitles a school to have an annual membership if the school roll is more than 100 students. Each school is able to register 8 individual teachers for the benefits of membership. JOIN
School Membership - NZ\$ 241.50	School Membership - NZ\$ 356.00
Entitles a school to have an annual membership if the school roll is between 100 – 1000 students. Each school is able to register 8 individual teachers for the benefits of membership. JOIN	Entitles a school to have an annual membership if the school roll is more than 1000 students. Each school is able to register 8 individual teachers for the benefits of membership. JOIN

Individual ⓘ

<input type="radio"/> Secondary Member \$30.00 annual	<input type="radio"/> Tertiary Member \$30.00 annual
<input type="radio"/> Primary Member \$15.00 annual	<input type="radio"/> Intermediate Member \$15.00 annual
<input type="radio"/> Early Childhood Member \$15.00 annual	<input type="radio"/> Area School Member \$15.00 annual
<input type="radio"/> Kura Kaupapa Māori Member \$15.00 annual	

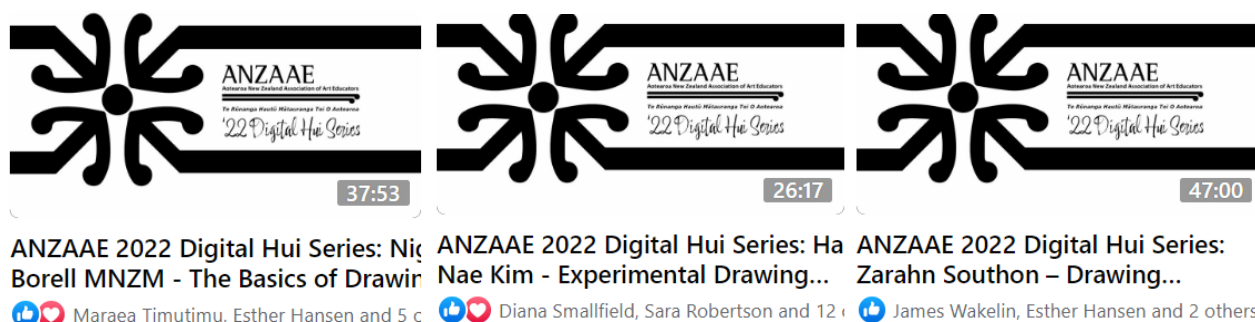
To encourage more uptake from Kura Kaupapa Māori, Area Schools, and the Early Years and Primary sectors we offer a reduced membership rate for these educators.

We also offer free membership to PCT's and all tertiary students – this will include students outside of initial teacher training, for instance an experienced educator completing further study.

As part of our 2022 membership drive, we brokered a deal with the publishers of the Toi Tū Toi Ora book. This enabled us to order copies of the book at cost. Recognising the value of this book, we then offered discounted rates to educators, at cost or below, including providing a free copy to Kura Kaupapa Māori kaiako. Our aim was to make this most valuable resource widely available and to make ANZAAE visible, growing membership in areas we lack. Our final 200 copies of Toi Tū Toi Ora will be offered to 2023 AGM attendees to take home.

Regional Support

Our work to strengthen regional subject associations has continued, which has helped to connect Ministry of Education RAS leads with regional groups. In October 2022, we brought representatives from each region together in Wellington for two-days of professional learning and development at City Gallery. One outcome of this hui was a series of three video-based drawing resources, which regional representatives could use as a starting point for planning professional learning activities in their region.

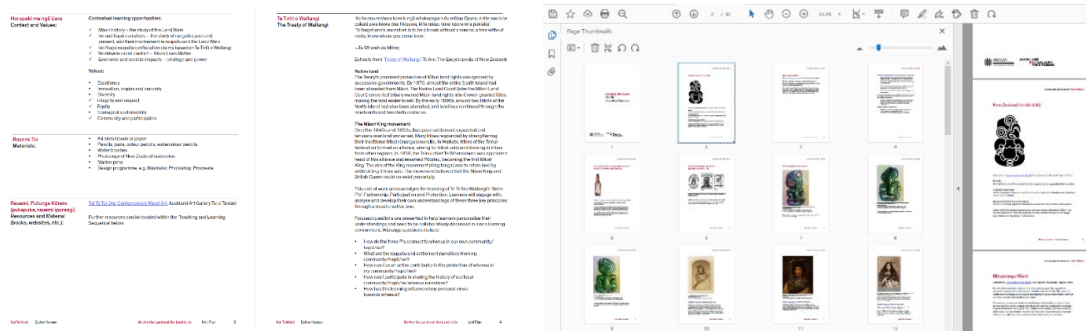


Regional Funding

An outcome of the October 2022 AGM, held at the regional hui, was the provision of funding from ANZAAE to regions to directly support regional association growth and professional development. Regional representatives have a budget to draw from, to help cover the cost of holding professional development in the region, or to support the establishment of a regional network. The budget is based on the membership numbers within a region as of 31 March 2023. Where limited membership numbers exist, further support is available to aid regional growth. ANZAAE is hopeful that this funding can continue however, it is reliant on receiving further NEX funding and there has been no indication as to whether NEX funding will continue at this stage. Our current NEX contract concludes in December 2023. Further details of regional funding [can be found here](#).

Resourcing

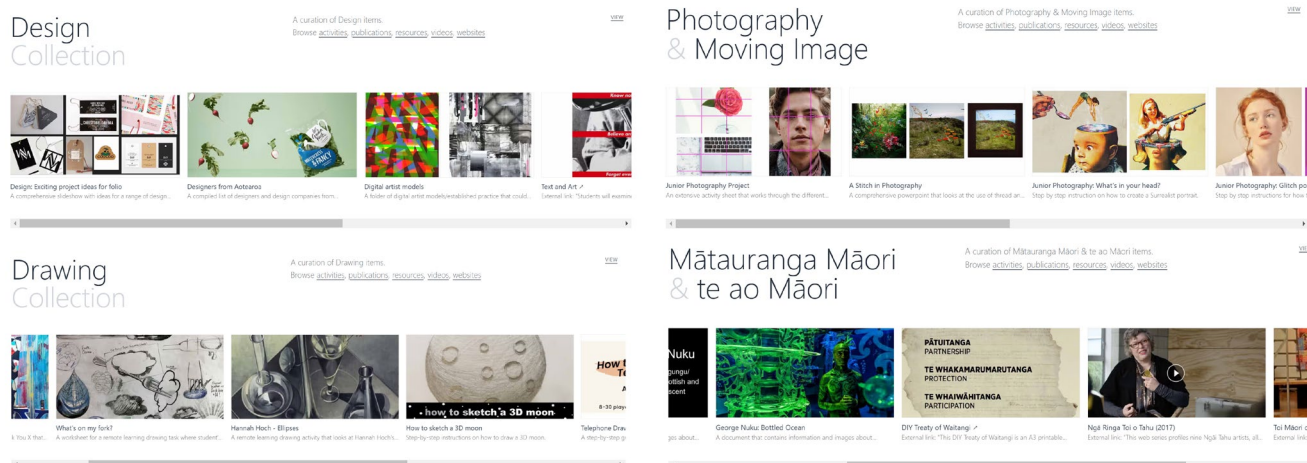
Our work with Auckland Art Gallery Toi o Tāmaki was completed in 2022 with [five resources available](#). We are proud to have held to our commitment to not publish these resources in English until the Te Reo versions were also available and that we would not preference one Art form over another by publishing some before others. We are grateful to the gallery for supporting us with copyright through their collection and relationship with artists.



Digital Platform and Resource Hub

Our website is still a work in progress. The new site will include a member only login, where members can check and renew membership status, and update their individual details. The login will also allow the option of a members only resource section in the future. This is something we have pushed pause on for now as ANZAAE membership is continuing to grow organically. Additionally, the open sharing of resources is in the best interest of the sector as we move through the Curriculum Refresh and NCEA RAS however, if NEX funding ceases at the end of 2023, this may be something that the Executive Committee choses to revisit in the future.

The [ANZAAE Resource Hub](#) was finally launched over the 2022-23 summer break. The range of resources available on the platform continues to grow. We have developed the site as a hub, or launchpad where all educators can access resources, regardless of membership status.



There is a search function within the Resource Hub, to enable users to quickly find what they are looking for. Resources have also been divided into a greater number of collections, versus the previous Learning Resources page on our website, to help with browsing. There are several features of the hub that our team are still not happy with. For instance, the excessive clicking required to see all resources within a collection. Once the busy workload of the ANZAAE 2023 Conference has wound up the new Executive team will be working to resolve these issues and complete the website. A new designer will be engaged to support this process.

Digital Hui

In addition to our Resource Hub, we have several video resources available on our Facebook page, including 2021 Conference videos and our 2022 Digital Hui Series. 2023 Conference presentations are also being filmed to be shared online via our Facebook page.

Our 2022 Digital Hui series continues to be viewed, growing subject expertise across Visual Arts specialties. We would like to thank everyone who has contributed to our Digital Hui Series, please do get in touch if you are interested in presenting one in the future.

A series of online hui's to support teaching and learning of Visual Arts in Aotearoa New Zealand.



ANZAAE 2022 Digital Hui Series: Tips and Tricks for Teaching Sculpture
a year ago · 416 views

• You, Bridget Burnett, Vicky Moore-Allen and 1

ANZAAE 2022 Digital Hui Series: Improving Outcomes for Printmaking
a year ago · 413 views

• You, Bridget Burnett, Vicky Moore-Allen, Maree Timutimu and 1

ANZAAE Digital Hui Series 2022: Approaches to teaching Sculpture
a year ago · 264 views

• You, Bridget Burnett, Vicky Moore-Allen and 1

Presentations from the 2021 ANZAAE Conference Hold fast to your identity - Kia mau ki to tuakiriranga April 2021, Ōtautahi - Christchurch



ANZAAE Conference Keynote 2021
Nigel Borell
a year ago · 505 views

• You, Donna Tupaea, Maree Timutimu and 21

ANZAAE Conference Presentation 2021
Sam Eng: Why Sculpture?
a year ago · 353 views

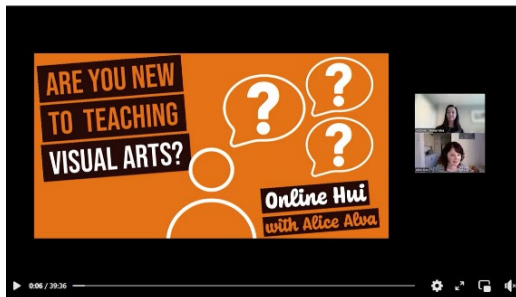
• You, Kirsty Grieve, Sophie Neil and 24 others

ANZAAE Conference Presentation 2021:
Geoff Harris: Suitable contexts and...
a year ago · 374 views

• You, Jay Pressnell, Vicky Moore-Allen and 16 others

Face-to-face is always our preferred method of delivery however, online spaces allow us to reach a wide audience, and give access to geographically isolated educators.

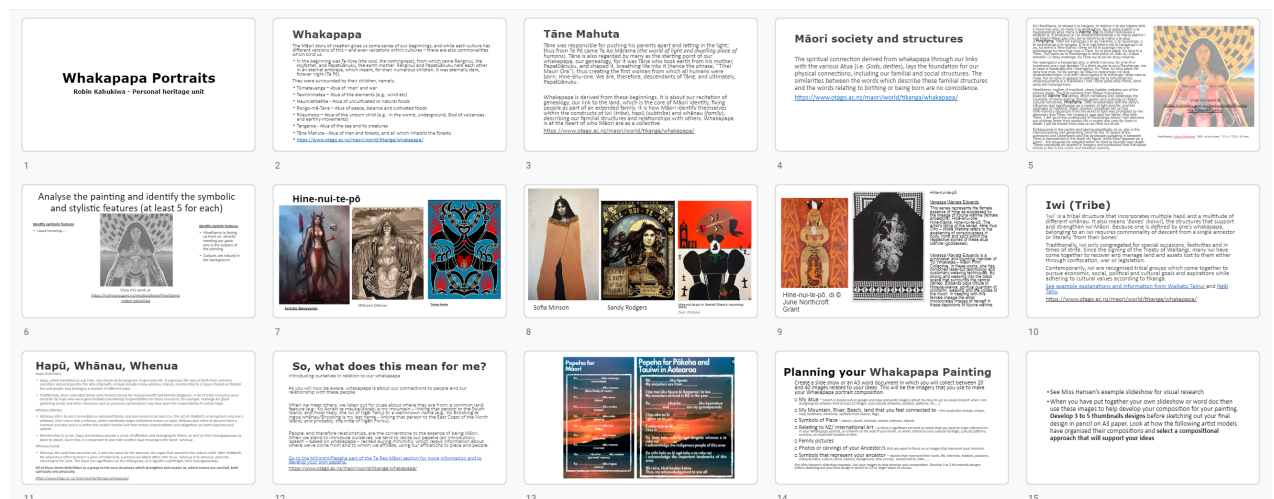
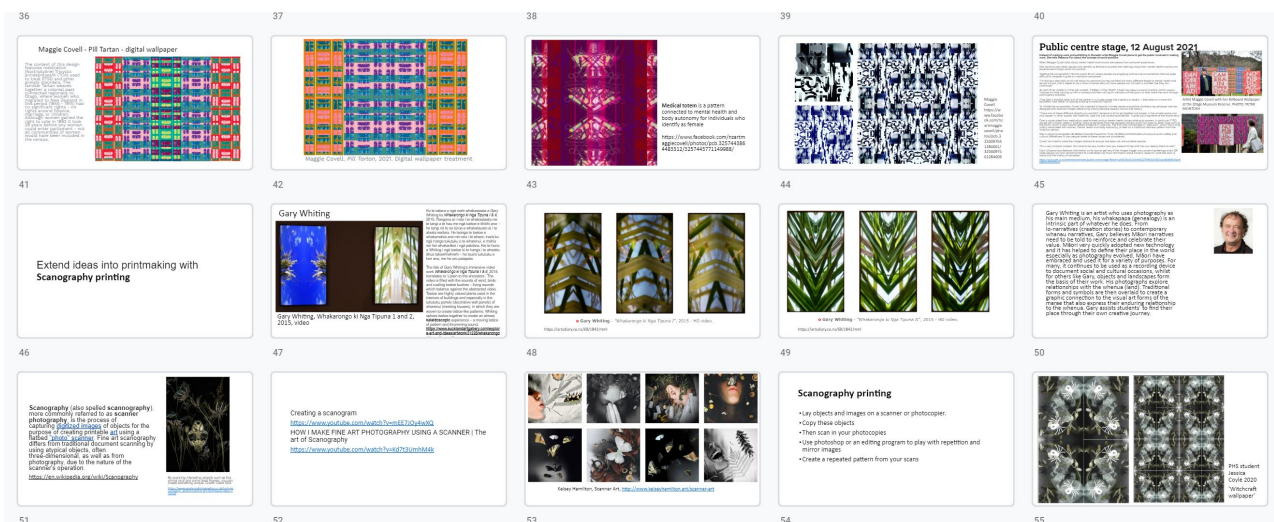
We successfully delivered a hui for PCTs at the start of Term Two and had hoped to run further online hui over the past few months however, the demands of conference organisation and on-going industrial action has made the preparation and provision of PLD during Term time challenging.

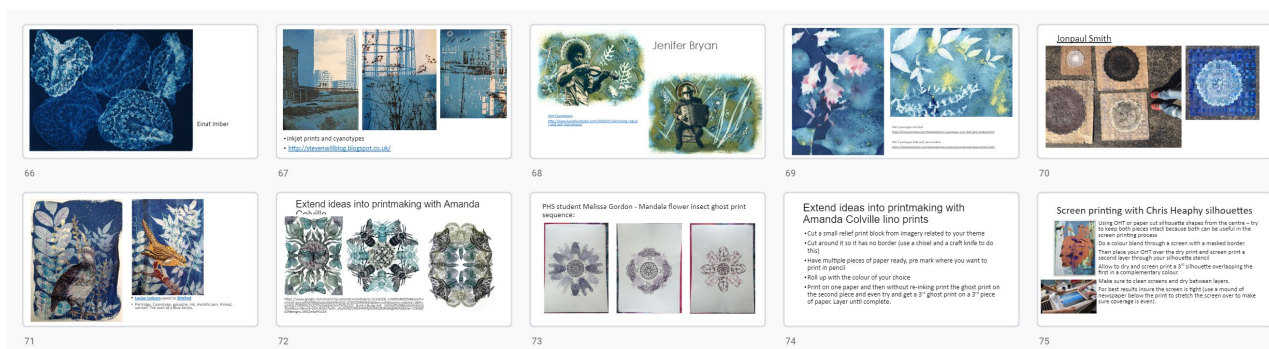


ANZAAE Digital Hui: Visual Arts Teaching for PCT's with Alice Alva

ANZAAE Digital Hui: Visual Arts Teaching for PCT's with Alice Alva hosted by ANZAAE Co-Chair Emma Wise In this hui Alice Alva discusses curriculum, pedagogy and content for Visual Arts teaching and learning programmes. Alice is a multi-disciplinary artist and educator based in Kiriokitea - Hamilton, New Zealand.

The resources that have been produced by ANZAAE to date are rich. They keep Mārotutanga Māori at the heart of learning and have adaptable content, which can be tailored to suit local curriculum. A number of resources contain practical demonstrations and exemplars to support the art-making process. The practical elements are particularly useful for Primary educators who may not have huge experience in making art however, they are also designed to support hybrid learning situations where a student needs work independently or is in isolation.





Resource development has been challenging due to the extra workload this can place on educators. However, we continue to look to engage new resource writers and content creators, so if you are interested, please do get in touch with the Executive Committee.

Tangata Whenua Engagement

ANZAAE continues to explore ways to grow in this space. Bringing mātauranga and indigenous knowledge into the ANZAAE space and growing Tangata Whenua educators in a collective way, is our visionary thinking and guides future mahi.

Tangata Whenua representatives from across sectors and regions were invited to a hui with us in July 2022. This hui was a consultation to establish a shared kaupapa to ensure the voice of Tangata Whenua is present in all we do. As a result of this hui, things that come to ANZAAE with a kaupapa Māori focus go to our Tangata Whenua executive members, who when needed can call on extended advisory outside of the executive team.

ANZAAE tangata whenua representatives remain actively involved with educators and providers across all sectors, and along with other Māori and Pasifika arts educators, continue important work around Mana ōrite mō te mātauranga Māori and Pacific Values, creating opportunities that acknowledge diversity and equity for all in Visual Arts education.

The work for ANZAAE from here

As an association, we are acutely aware of the need to address the learning needs of our most vulnerable communities - Māori and Pasifika in particular. For this reason, we have always been committed to developing resources and opportunities that prioritise these areas. Future professional learning and development will continue to address these gaps and the disparities that continue to persist.

Advocacy, Growth and Communication

Continuing to grow membership, and engaging with all educators working in Visual Arts education in New Zealand continues to be essential work for ANZAAE. ANZAAE has a vital role in ensuring an effective network and flow of information between Tertiary Art providers, Galleries, Iwi, Primary, Intermediate and Secondary schools in both English and Māori medium and the wider community.

The association must remain actively involved with the Ministry and NZQA through the Curriculum Refresh and NCEA RAS, supporting resource development and providing complementary professional learning and development. ANZAAE must ensure that the Visual Arts learning area and assessment and verification processes are developed in the best interest of all ākonga. We encourage all members to share their voice regarding developments through consultation processes, and will continue to provide a collective voice where needed.

Support Networks

ANZAAE must continue to provide opportunities for teachers to access support, forums, workshops, expert knowledge, and skills for beginning and experienced teachers at all curriculum levels. To achieve this, we need to engage expert facilitators, but also facilitators who have experience across a range of contexts and settings, demonstrating awareness of the diverse and ethnic-specific identities, languages and cultures educators work within a school environment.

We have made inroads with supporting regional subject associations however, we acknowledge that our aim to build closer working relationships with all regions in 2023 remains a work in progress due to the workload of organising the ANZAAE 2023 Conference.

We are conscious that many educators live and work in isolated situations. The association must support every member to grow a strong support network as this collaborative connection is a critical part of building educator knowledge and supports well-being. ANZAAE must support educators to form connections and strengthen and feed into these networks where possible. Regional associations are one part of this puzzle, but further approaches to creating support networks, which extend beyond regional boundaries must be investigated.

Continuing to build our online capacity

ANZAAE must continue to grow online capacity, including developing new resources, ensuring continued reach and support of our membership. The development of our new website and resource hub has moved slower than we would like and as a result we are engaging a new designer to complete this important work. The associations presence on social media platforms also needs to be maintained and utilised to support growth.

Leadership

We would like to acknowledge and thank everyone who has provided leadership by advising the executive, developing resources, or running professional learning and development opportunities for members.

We are currently operating on the leadership model presented and agreed upon at the 2021 ANZAAE national conference however, we still have work to do to embed our two-whare model of leadership so that ANZAAE continues to operate in this way in the future. This is on-going work, which will continue with the new Executive.

Workload for our Executive members, who are volunteers, is something we must continue to address to ensure sustainable leadership. We continue to look at opportunities to cultivate leadership within the association and the extend an invitation to any member who is keen on contributing at the executive level, even in an advisory capacity, to get in touch.

We would like to thank the continuing Executive Committee members for their contribution and commitment and give our heartfelt thanks to those who are stepping down after many years serving ANZAAE at the executive level.


We also thank our wider membership for their continued support of ANZAAE.

Ngā mihi nui,



Donna Tupaea-Petero

Co-Chair ANZAAE : Tangata Whenua



Emma Wise

Co-Chair ANZAAE : Tangata Tiriti