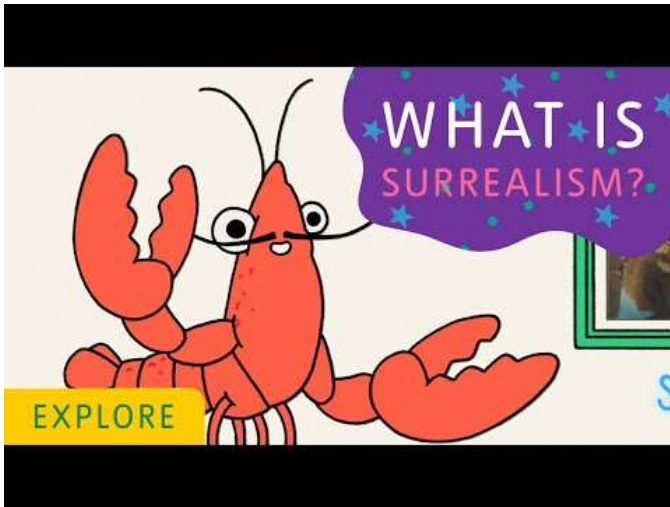


LOCKDOWN MAHI: SURREALISM

Research and drawing

MAHI INAAIANEI/DO NOW:

Watch the 2 videos below about surrealism



What is surrealism? | Tate

https://www.youtube.com/watch?v=1YE_Zas-A5A



Surrealism in 5 Minutes: Idea Behind the Art Movement

<https://www.youtube.com/watch?v=bP2JS4vDvNc>


Look at your class notebook for other Surrealist resources for your research [Surrealism Research](#) (Web view)

You can do the following on this worksheet; or you can make a slideshow presentation.

MAHI 1: RESEARCH

What is Surrealism? Describe *in your own words*

Find 3 examples of artworks by Surrealist artists below. (The first one has been started for you). Include title, year and medium

Artist	Artwork 1	Artwork 2	Artwork 3
Salvador Dali	 The Persistence of Memory, 1931, Oil on canvas		
Frida Kahlo			

René Magritte			
Hannah Hoch			

MAHI 2: SURREALIST ROOM

- Print out the room below or redraw it on to paper
- Use pen, pencil and colouring pencil to create your own surrealist room inspired by the Surrealists like Magritte and Herlinde Spahr
- Think outside of the box! You may want to add more windows or doorways to your room.
- Play with *scale* and *juxtaposition*.

Scale = the size of something in relation to something else

Juxtaposition = things placed next to each other that don't belong

Instead of drawing you can create a digital version if you like using Photoshop, Procreate etc

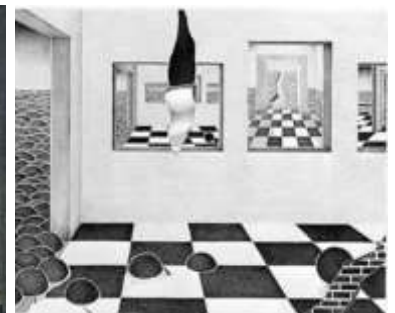
Take a photo of your final drawing and upload it to the assignment on Teams or paste it into this document or your slideshow



Rene Magritte



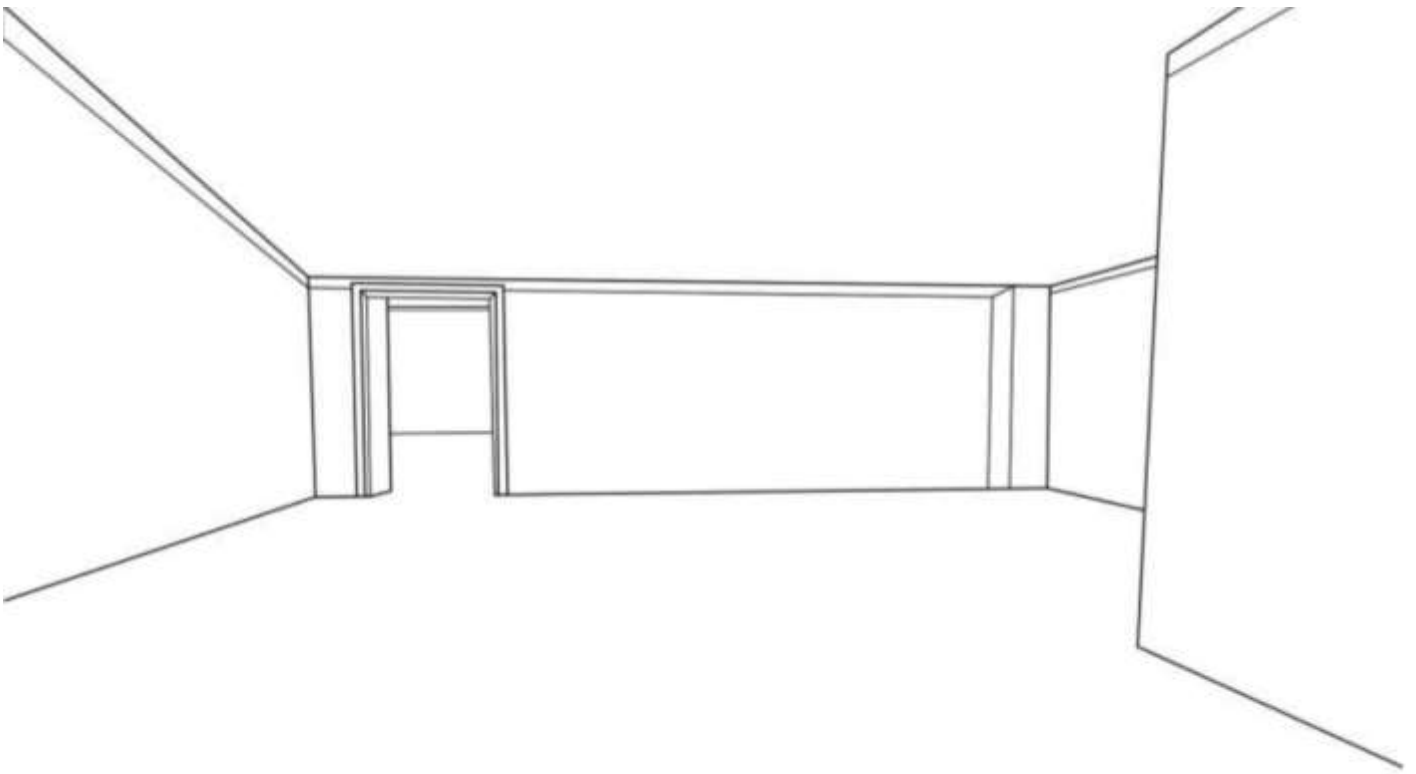
Gorgio de Chirico



Herlinde Spahr



Rene Magritte

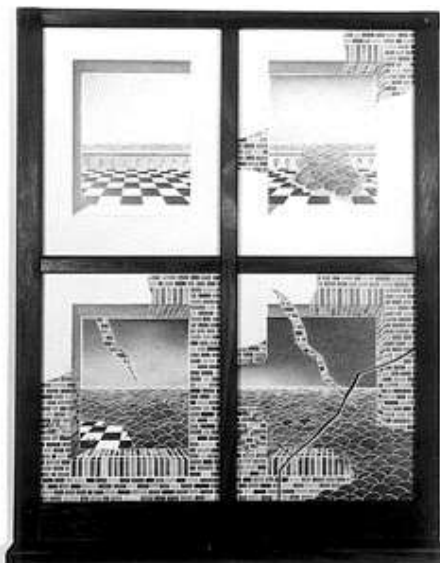


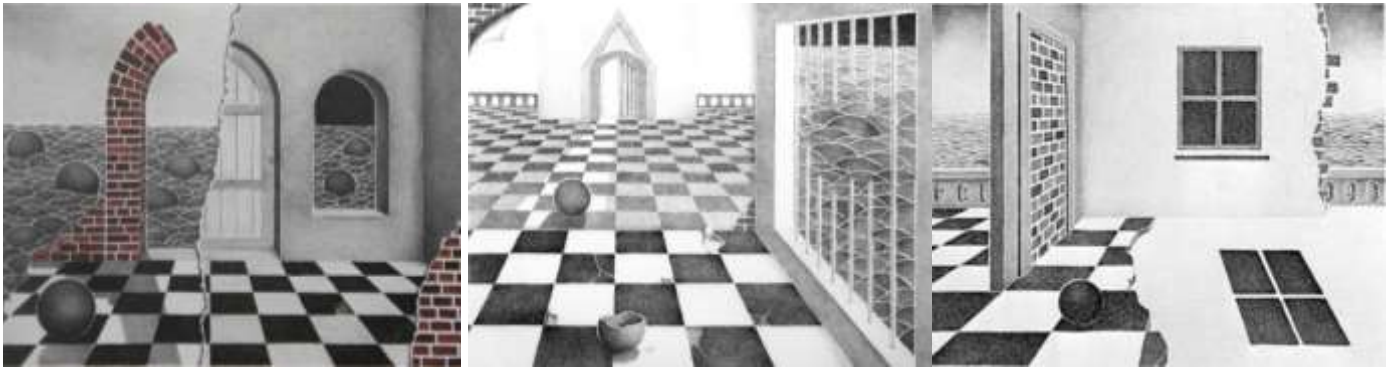
MAHI 3: A ROOM WITH A SURREAL VIEW

As we all remain in our Level 4 bubbles, our surroundings can become a little boring, *but you can change that with a little **imagination!*** Take inspiration from Surrealist artists like *Herlinde Spahr* and *Neil Simone* to create a **drawing** looking through a window/door into a surreal world of your own creation.

- *You will need:* pen or pencil and paper (or any materials you can find at home)
- Take inspiration from the artists below
- Draw a window frame or door. This may be simple like Herlinde Spahr or a more complex optical illusion like Neil Simone
- Draw a surreal world from your own imagination as if you are looking out of a window/door into this world

Take a photo of your final drawing and upload it to the assignment on Teams or paste it into this document





Herlinde Spahr



Neil Simone

Bonus mahi: Exquisite corpse



This is a great activity you can play with your whole whaanau! All you need is a piece of **paper** and a **pen or pencil**.

- Fold your piece of paper into 3.
- The 1st section will be the head, the 2nd section will be the torso and the 3rd section will be the legs.
- Take turns drawing each section, but don't look at what other people have drawn!
- The wackier the better

- Watch this video to see how it works:
<https://www.youtube.com/watch?v=OVjuP8ScVfA>

Take a photo of your final exquisite corpse and upload it to the assignment on Teams or paste it into this document. There will be a prize for the best exquisite corpse drawing when we return to school.



The Chapman brothers, Jake & Dinos Chapman did a series of exquisite Corpse etchings in 2000. Brothers who are artistic collaborators, and emerged as members of the Young British Artists (YBA) group in London in the early 1990s. Their sculptures, installations, and works on paper are deliberately aimed at confronting middle-class values and notions of good taste. Despite their bad-boy reputations, the Chapmans' work is often grounded in art history, including repeated references to Francisco de Goya and other proponents of satire and fantasy. These etchings, for example, are from a portfolio inspired by the Surrealist game of chance known as Exquisite Corpse, in which a sheet of paper is folded into four parts corresponding to the head, chest, trunk, and legs of a human body. Each player draws one section and then conceals it before passing it on to the next. In that manner the two brothers took turns drawing on prepared etching plates to make this portfolio. Combining horror with humour and obsessive details that are possible in etching, the Chapmans concocted the hallucinatory figures in this series by connecting various bizarre and incongruous ideas.

Untitled from *Exquisite Corpse* 2000

