

YEAR 10 ART LOCKDOWN MAHI 2021

The following tasks are designed for you to complete at home with any materials you have handy. Use whatever you can find at home: pens, pencils, felts, coloured pencils etc. You can draw on printer paper, brown paper bags, cereal boxes, old notebooks.

Some areas you may find more interesting than others so please feel free to concentrate on the areas you prefer to

MAHI 1: WHAT IS SURREALISM?

Decode the message. Each letter in the phrase has been replaced with a random letter or number.

A	B	C	D	E	F	G	H	I	J	K	L	M	N	O	P	Q	R	S	T	U	V	W	X	Y	Z
22												19					13	23	20				2	4	

S R R A S M S A S T Y A R T
 23 9 13 13 10 22 17 3 23 19 3 23 22 23 20 4 17 10 26 14 22 13 20

A T R A T R T A T A
 22 15 25 17 3 20 10 13 22 20 9 13 10 20 6 22 20 5 10 7 22 15 3 15

T T T T T R Y
 20 6 10 20 1 10 15 20 3 10 20 6 16 10 15 20 9 13 4

S R R A S T A R T X R S R A M S
 23 9 13 13 10 22 17 3 23 20 22 13 20 10 2 21 17 26 13 10 23 25 13 10 22 19 23

A T S S M Y
 22 15 25 20 6 10 9 15 16 26 15 23 16 3 26 9 23 19 3 15 25 5 4

M A S M A S A
 16 26 19 5 3 15 3 15 7 3 25 10 22 23 3 19 22 7 10 23 22 15 25

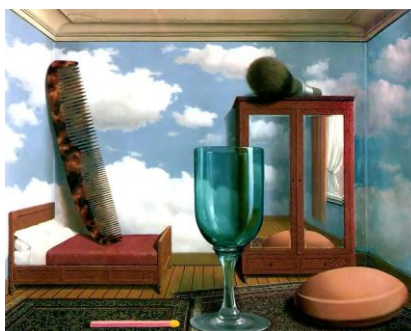
T S A S T R A A
 26 5 18 10 16 20 23 3 15 22 23 20 13 22 15 7 10 22 15 25

X T A Y
 9 15 10 2 21 10 16 20 10 25 1 22 4

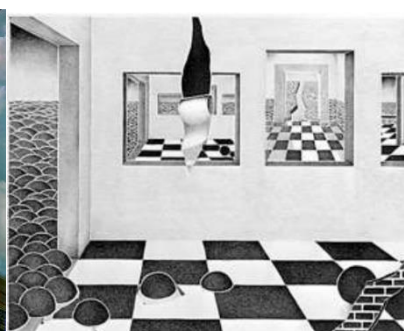
MAHI 2: SURREALIST ROOM

- Turn the empty room on the next page into your own Surrealist room
- Use pen, pencil and colouring pencil or whatever you can find at home to create a room inspired by the Surrealists like Magritte and Herlinde Spahr
- Think outside of the box! You may want to add more windows or doorways to your room.
- Play with *scale* and *juxtaposition*.

Scale = the size of something in relation to something else
Juxtaposition = things placed next to each other that don't belong



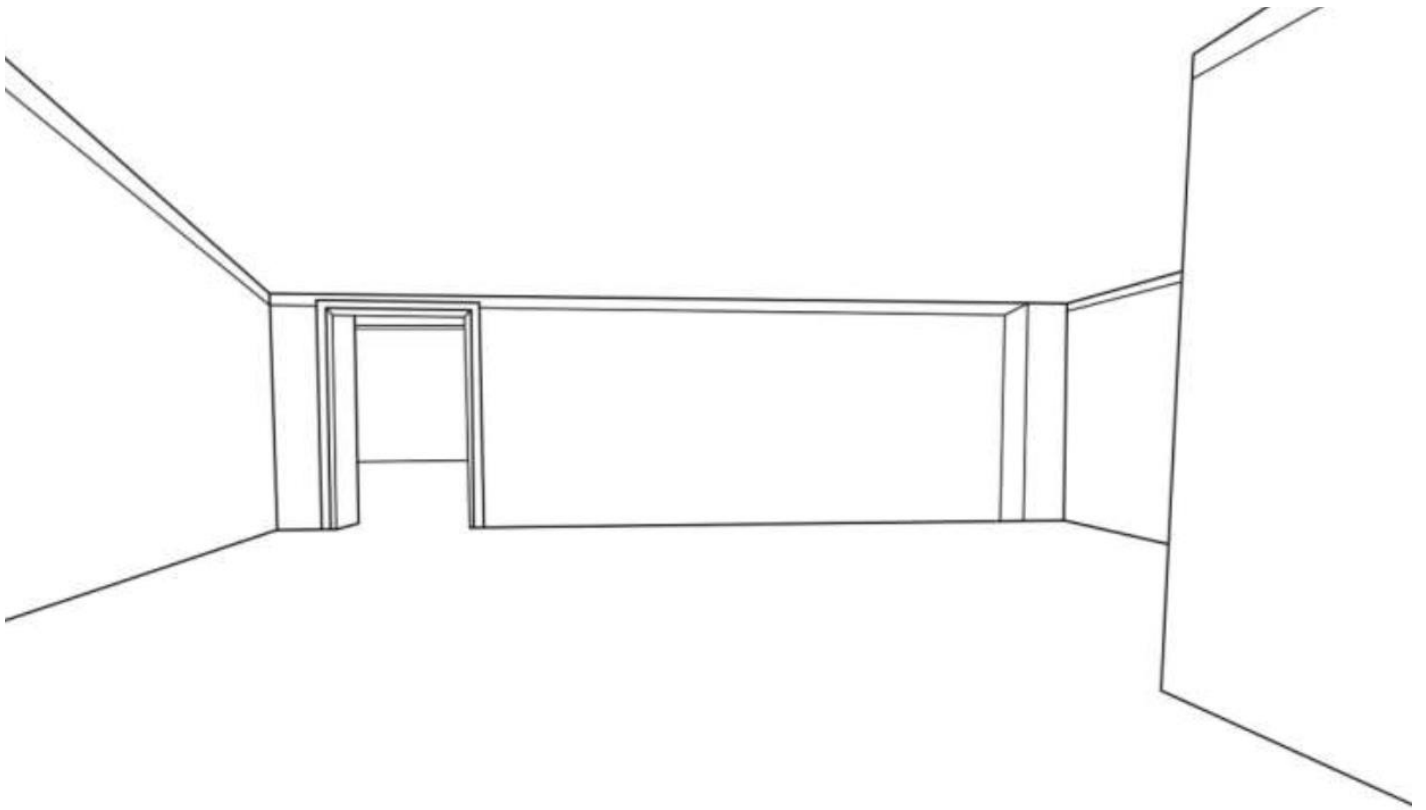
Rene Magritte



Herlinde Spahr



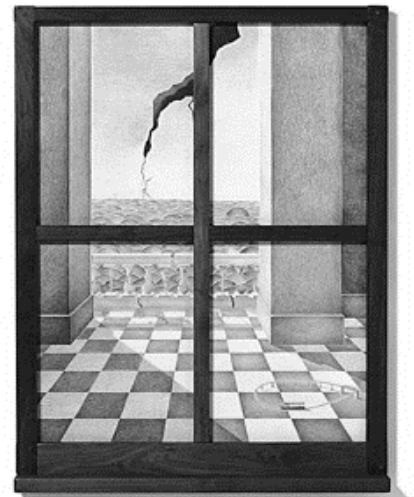
Giorgio Chirico



MAHI 3: A ROOM WITH A SURREAL VIEW

As we all remain in our Level 4 bubbles our surroundings can become a little boring. *But you can change that with a little imagination!* Take inspiration from Surrealist artists like *Herlinde Spahr* and *Neil Simone* to create a **drawing** looking through a window/door into a surreal world of your own creation.

- *You will need:* something to draw with and something to draw on
- Take inspiration from the artists pictured
- Draw a window frame or door. This may be simple like Herlinde Spahr or a more complex optical illusion like Neil Simone
- Draw a surreal world from your own imagination as if you are looking out of a window/door into this world



Herlinde Spahr

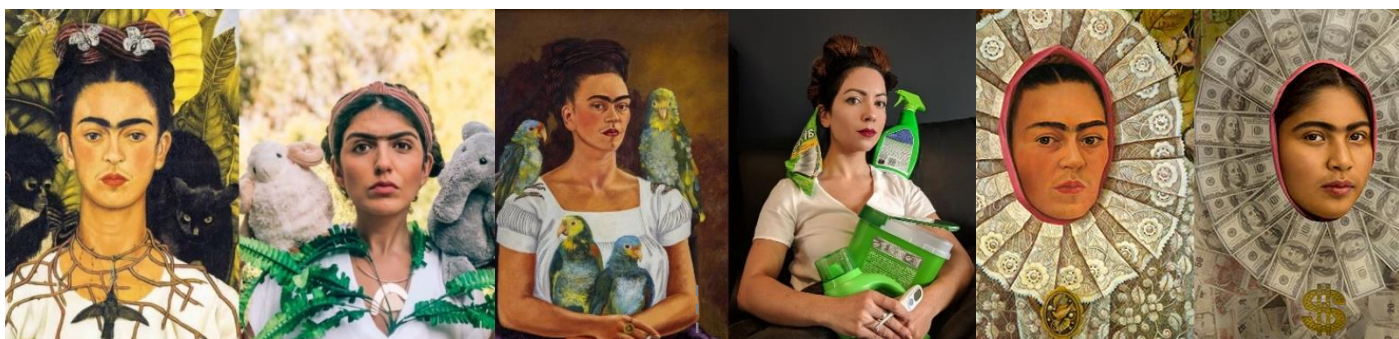


Neil Simone

Frida Kahlo (1907 –1954) was a Mexican surrealist painter known for her many portraits and artworks inspired by nature and popular culture of Mexico. Her artworks explore ideas about identity: gender, class and race in Mexico at the time. She also often painted about her experience with lifelong pain due to medical issues.

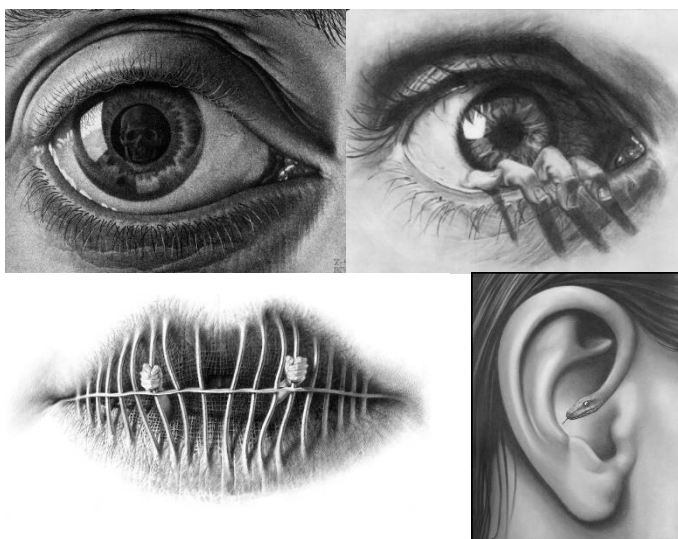
Your mahi: Recreate a Frida Kahlo portrait with items you have at home. Pose for the photo yourself or get a member of your whaanau to model for you. Take a photo on your camera or phone. Alternatively, you can *draw* your own recreation.

MAHI 4: FRIDA KAHLO INSPIRED PORTRAITS



MAHI 5: SURREALIST FACIAL FEATURES

Draw a facial feature with a surrealist twist. A simple approach to this task would be to place something in the pupil of the eye like the example by Escher below. But you may also consider extending your thinking to create an original drawing or draw a different facial feature. Think about how you can connect your chosen facial feature with the theme/message of your artwork.



MAHI 6: SURREALIST COLLAGE

Create a surrealist collage inspired by artists like Luis Martin (pictured). If you have old magazines, newspapers and junk mail you can cut these up and create a collage. Think about your composition and how you **juxtapose** your objects to create a fantastical surreal artwork.



MAHI 7: SURREALISM WORDFIND

U V F L M S E F K I Y S F O G C I X
 J N V H D N R W E O U T L Q N I L V
 U X C Q E S Y Y Q R I H M X I Y A O
 X H J O N G J H R R A N U G T S D M
 T V L T N P A E L K E D N N N J R A
 A W H W H S A L A C T A O R I Z O M
 P R O O U L C D L A K I L Q A O D W
 O C S A L Y I I I O T J J I P T A M
 S K X S O R G X O A C J E T T X V Q
 I L G X F N U H N U H V C O W Y L U
 T X T X S U U I B H S U W J Y O A M
 I E T T I R G A M E N E R A S N S T
 O U Q B S A R G F Q C U D R E A M S
 N X X F M F A N T A S Y P Z M C U V
 S R M I C O B V T N X V T E L E F R

- | | |
|-------------------------------------|-----------------------------------|
| <input type="radio"/> Salvador Dali | <input type="radio"/> surreal |
| <input type="radio"/> Frida Kahlo | <input type="radio"/> collage |
| <input type="radio"/> Rene Magritte | <input type="radio"/> painting |
| <input type="radio"/> dreams | <input type="radio"/> imagination |
| <input type="radio"/> unconscious | <input type="radio"/> fantasy |
| <input type="radio"/> juxtaposition | <input type="radio"/> reality |



MAHI 8: EXQUISTE CORPSE

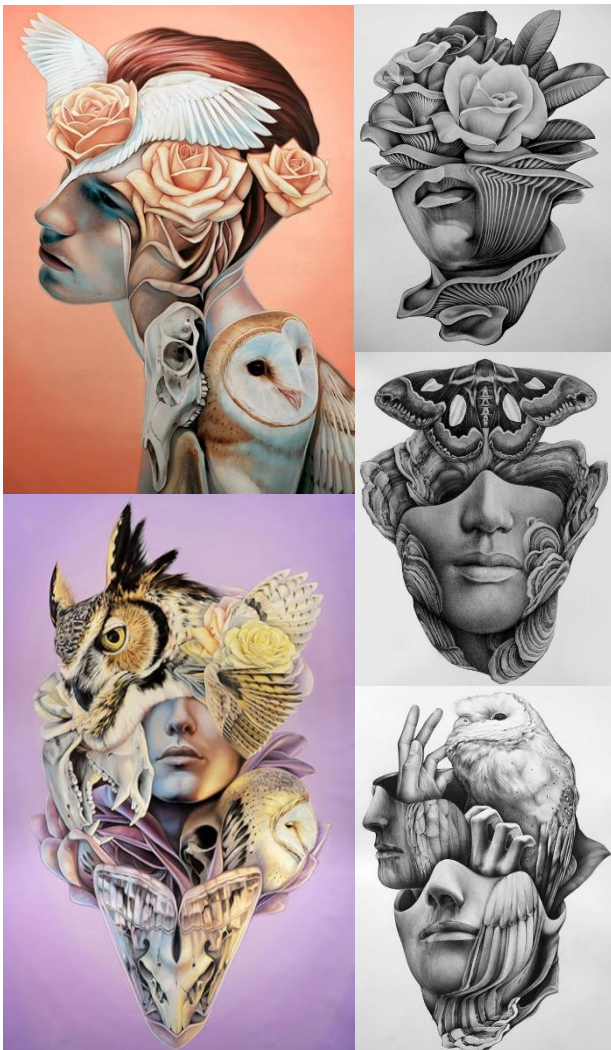
This is a great activity you can play with your whaanau! All you need is a piece of **paper** and a **pen/pencil**.

- Fold your piece of paper into 3.
- The 1st section will be the head, the 2nd section will be the torso and the 3rd section will be the legs.
- Pass the folded paper around and take turns drawing each section, but don't look at what other people have drawn!
- Once everyone has had a turn unfold your paper to reveal a wacky character

MAHI 8: SURREALIST FACES

Using Collin Elder, Aykut Aydogdu and Christina Mrozik as inspiration create a Surrealist portrait drawing. Your portrait could be of yourself, a family member, friend or famous person.

- Include at least half the face
- Replace part of the face and facial features with other things.
- The objects you include can be used to tell a story about the person in your portrait.
- You could play with double exposure (layering images), multiple viewpoints, stacking, scale etc.
- You may base your composition on the examples provided but use your own ideas and imagery.



Collin Elder



Ayktu Aydogdu

Christina Mrozik