

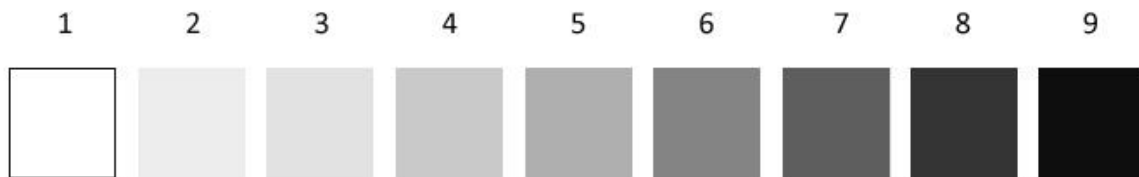
7 ELEMENTS OF ART

Line | Shape | Colour | **Value** | Form | Texture | Space

When you want to create an amazing piece of art (aka aesthetically pleasing – easy on the eye) you think about these 7 basic elements.

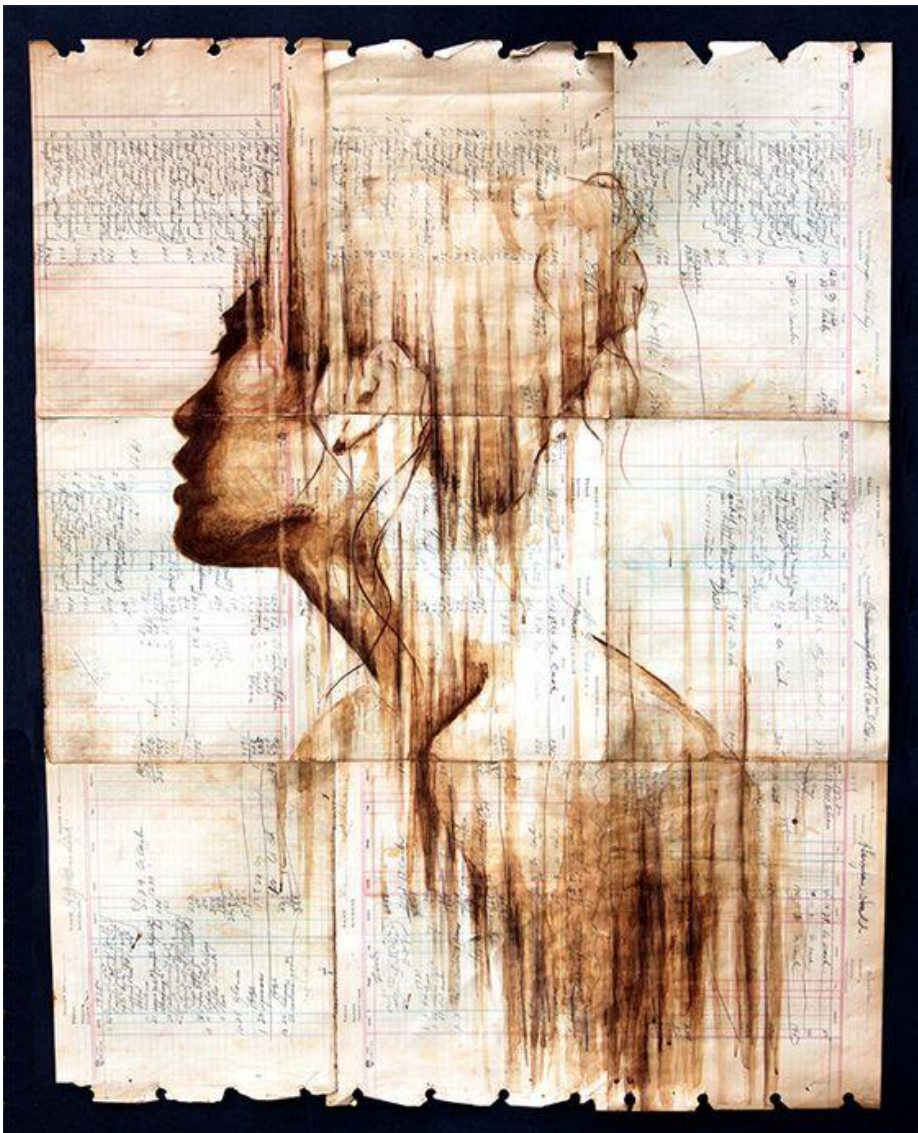
VALUE:

Value in art is essentially how light or dark something is on a scale of white to black (with white being the highest value and black being the lowest value).



With this in mind we are going to do some painting but with one colour – and different strengths of that colour (aka Coffee!)

Michael Aaron Williams:



Can you see how he uses different shades of coffee? Really dark areas to show shadow (lots of layers and a strong brew!) and the really light areas using diluted watery coffee to show depth, space and form.

Heres my pinterest board of ideas:

<https://pin.it/7an2fgy>

Our task!

Pick an object from around the house or a picture off the internet and use coffee paint!

I chose one off the internet...but pick something from around the house!

And then used a partial blind contour drawing technique. Basically 80% of the time you are looking at the picture really absorbing every detail of the object only occasionally looking at what your hand and pen are doing. How awesome is your hand to eye co-ordination? Once your pen is on the paper - thats it! NO lifting that pen untill you are finished!

So the effect is "QUIRKIER the BETTER"



I know yours will be WAAAAY better than my attempt - because in my example theres different values of tone, but is still looking pretty flat - I painted from my head - and not what was in front of me. Really observe what you are painting.

DIY Coffee paint: mix 1 teaspoon of instant coffee in a jar and add a few drops of liquid until its all liquid....experiment with adding more water to your coffee paint. And Im hoping you have a paint brush or cotton buds!

Final result!

We would love to see a **variety of tones** from light to dark – show some dimension! Give the image some depth using light and shadow. Also - the direction of stroke helps to form dimension.

A4 size (on any paper or fabric)

Using coffee! (Instant is the best and use the tiniest bit of water to start off with)

Experimentation with the coffee paint! So make sure you save all your experimental drawings

Let me know what you think team!! Cant wait for tomorrow night when ol' Aunty J gives us an update on our lockdown situation. Basically its instant coffee and the tiniest bit of water!

Ngā mihi nui,

Whaea Catherine