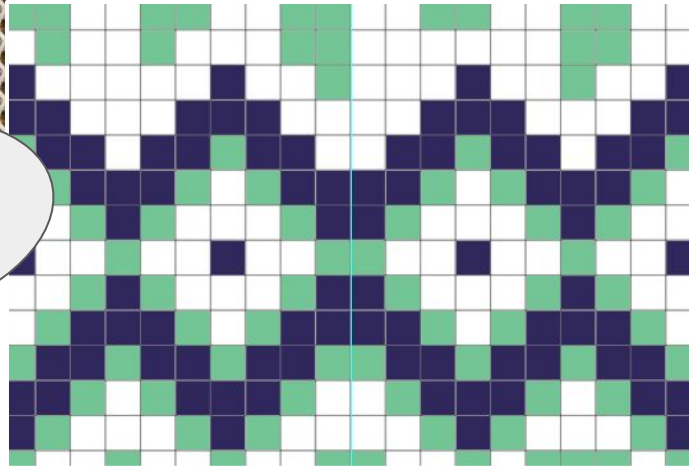


# TUKUTUKU PATTERN ACTIVITY

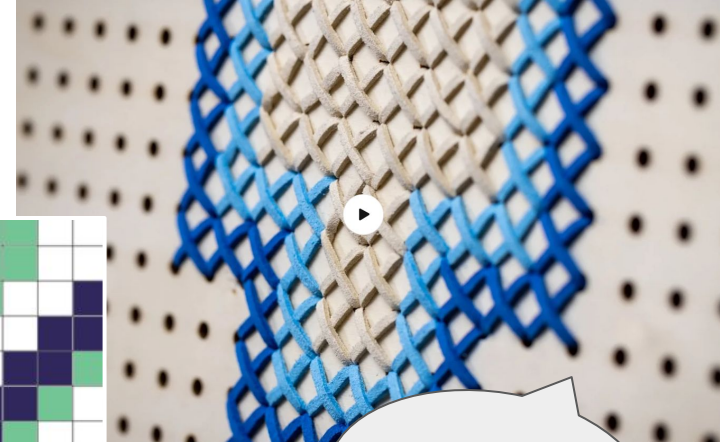
RESEARCH



PLANNING

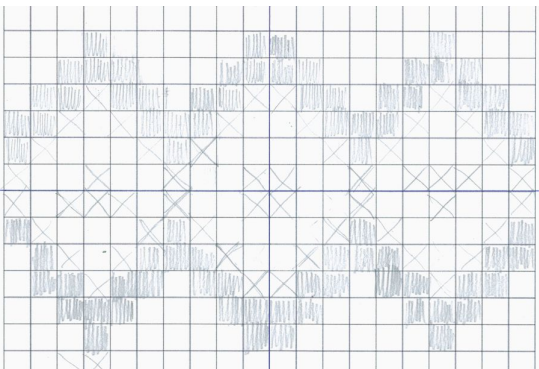


Apply the **Design Process** to research, explore, plan and create your finished Tukupuku Panel



MAKE

# TUKUTUKU PATTERN - STUDENT TASKS



## **YOUR TASK:**

Combine a range of traditional Tukutuku patterns that you are drawn to. You will put these patterns together to create your own design in Photopea and then you will select a section to weave.

## **STEP ONE:**

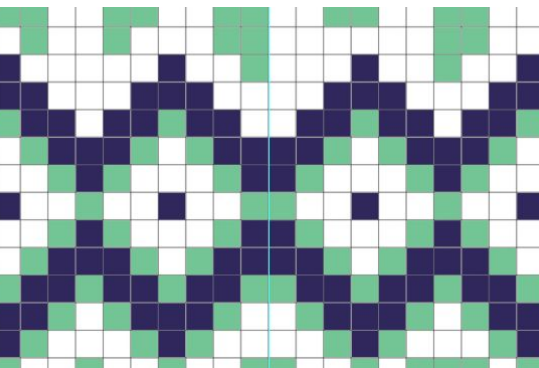
Complete the research activity in the following slides.

## **STEP TWO:**

Use this knowledge design your own 3 colour Tukutuku Design by hand, using the template provided.

## **STEP THREE:**

Transfer your design into Photopea to print out A4 in size.



**ONCE YOU HAVE COMPLETED THIS DIGITAL PATTERN, USE YOUR DESIGN TO WEAVE A SECTION ONTO A PEG-BOARD DIAMOND GIVEN TO YOU BY YOUR TEACHER.**

**YOU MAY CHOOSE TO PAINT YOUR BACKGROUND A COLOUR AND YOU CAN MATCH THE WOOL PROVIDED WITH THE COLOUR PALLETTE YOU HAVE GENERATED IN PHOTOPEA.**

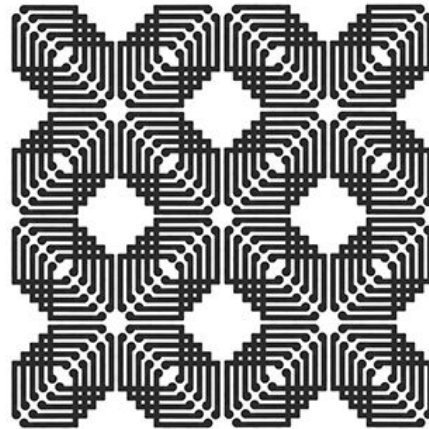
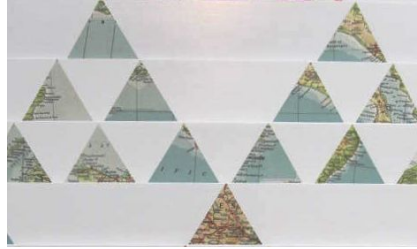
<https://www.whatucreative.com/pages/how-to>

# TUKUTUKU PATTERN - STUDENT TASKS

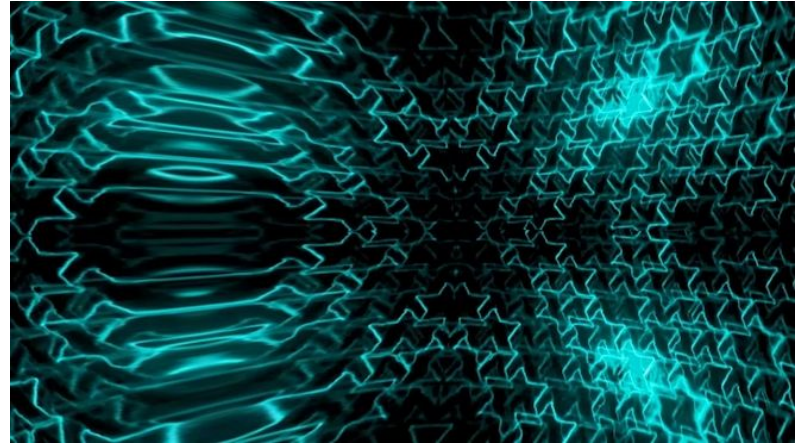
ARTISTS WHO USE TUKUTUKU PATTERNS IN THEIR WORK:



Sheree  
Willam



Raewyn Paterson

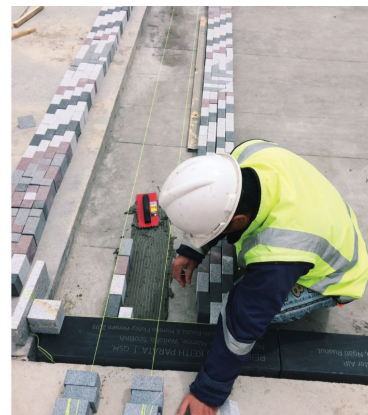
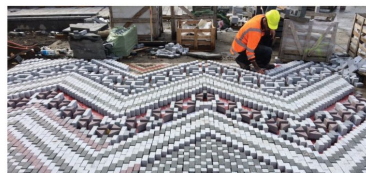
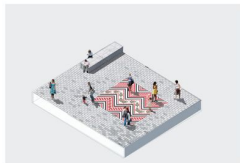


Kauri Wharewera

<https://www.circuit.org.nz/writing-and-podcast/a-conversation-with-kauri-wharewera-and-israel-randell/>

# TUKUTUKU + TANIKO PATTERN - STUDENT TASKS

TUKUTUKU + TANIKO PATTERNS IN THE REAL WORLD:



<https://bestawards.co.nz/toitanga/toitanga/landlab/nga-whariki-manaaki/>

# TUKUTUKU PATTERN - STUDENT TASKS

## STEP ONE - In detail:

Complete the following questions . . .

WHERE ARE TUKUTUKU PATTERNS TRADITIONALLY FOUND?

WHO TRADITIONALLY WEAVES THE TUKUTUKU PANELS?

WHAT ARE THEY TRADITIONALLY MADE OF?

WHAT ARE CONTEMPORARY VERSIONS OF TUKUTUKU PANELS MADE WITH?

*(make a list of the different materials you can find out about, or can see in NZ Tukutuku Artists works)*

# TUKUTUKU PATTERN - STUDENT TASKS

## STEP ONE - In detail:

Complete the following questions . . . .

FIND EXAMPLES OF TUKUTUKU PANELS THAT USE THE BELOW STYLES OF PATTERNS:

*Paste your picture here*

*Paste your picture here*

*Paste your picture here*

PATIKI

ROIMATA

POUTAMA



# TUKUTUKU PATTERN - STUDENT TASKS

## STEP ONE - In detail:

Complete the following questions . . . .

USE THE T.I.P CHART, OR ONLINE SOURCES, TO ADD THE MEANINGS OF EACH OF THESE PATTERNS:

PATIKI

*Add your text here:*

ROIMATA

*Add your text here:*

POUTAMA

*Add your text here:*

# TUKUTUKU PATTERN - STUDENT TASKS

## **STEP ONE - In detail:**

Collect some examples of Tukutuku Panels that combine some of the patterns you have researched into larger works that hold a narrative . . . .

**CHALLENGE:** Can you find out what some of these Tukutuku Panels mean? What is the story they are telling through the combination of patterns in the Panel? Does the way the artist has arranged these affect the way you read the work?



# TUKUTUKU PATTERN - STUDENT TASKS

## **STEP ONE - In detail:**

Collect some examples of Tukutuku Panels that are made of different materials than what we would see in a wharenui.

**CHALLENGE:** Can you identify the materials you can see in the examples you have found?

## TUKUTUKU PATTERN - STUDENT TASKS

## STEP FOUR:

Complete your Paint Texture Exploration Sheet.

Explore Cool and Warm colour combinations and mixing techniques.

Apply favourite Warm or Cool application to your Pegboard ready for threading. Scan in your experiments paste below



# TUKUTUKU PATTERN - STUDENT TASKS

## STEP THREE:

Transfer your design into Photopea to print out A4 in size.

Snip your design and paste on to this slide.

Try to use a colour palette generated from a palette generator . . . . <https://color.adobe.com/create/color-wheel>

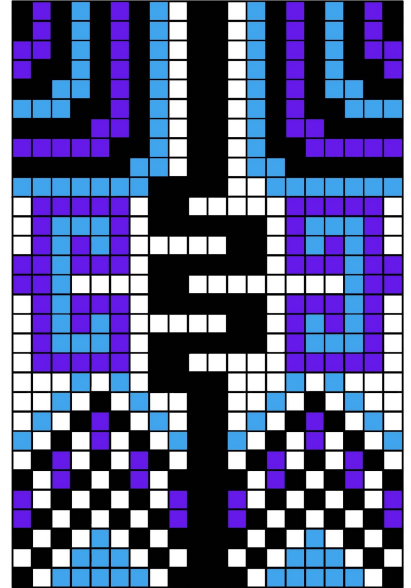
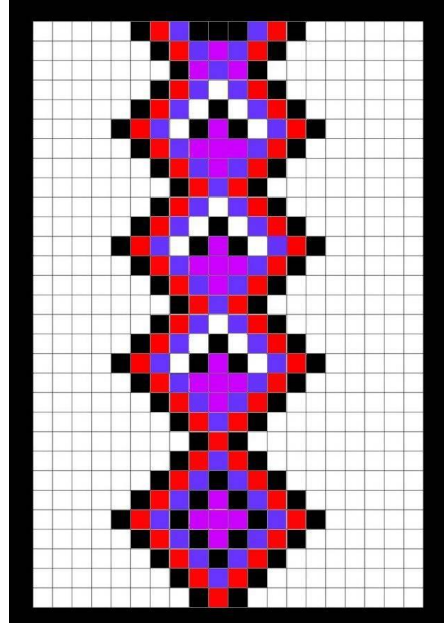
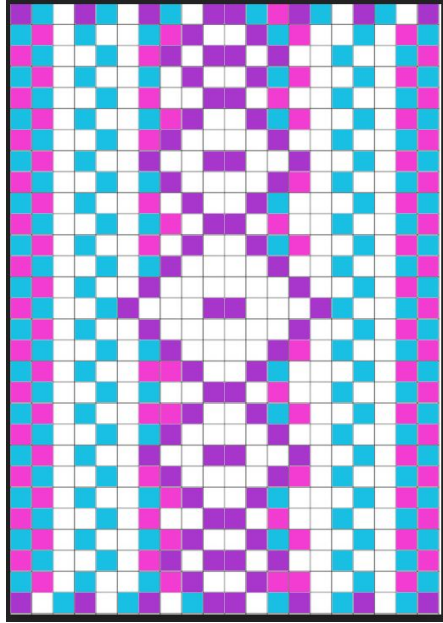
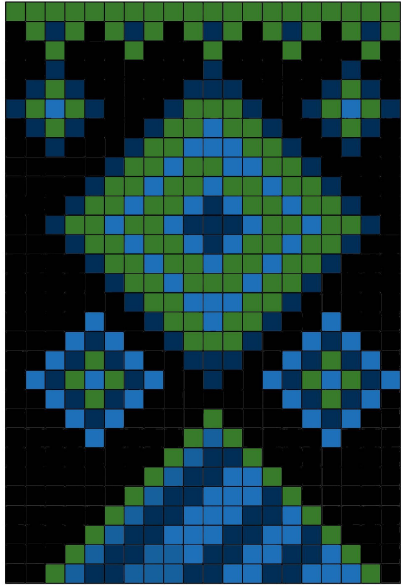
# TUKUTUKU PATTERN - STUDENT TASKS

ONCE YOU HAVE COMPLETED THIS DIGITAL PATTERN, USE YOUR DESIGN TO WEAVE A SECTION ONTO A PEG-BOARD DIAMOND GIVEN TO YOU BY YOUR TEACHER.

YOU MAY CHOOSE TO PAINT YOUR BACKGROUND A COLOUR AND YOU CAN MATCH THE WOOL PROVIDED WITH THE COLOUR PALLETE YOU HAVE GENERATED IN PHOTOPEA.

Take a photograph with your finished Tukatuku Artwork and paste on to this slide for assessment.

# EXAMPLES OF STUDENT WORK





# EXAMPLES OF STUDENT WORK

